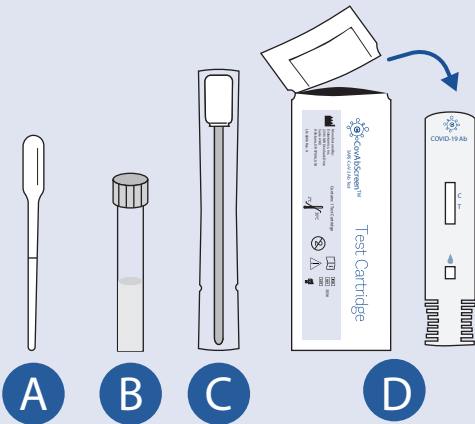


**1** Do not eat or drink 10 minutes prior to testing. Open the kit and identify the components.

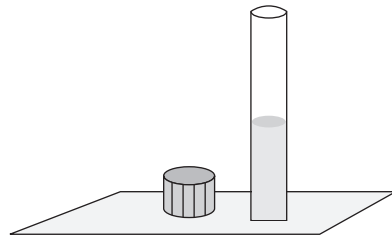
**Each CovAbScreen™ Single Test Kit contains:**

- A. One (1) transfer pipette
- B. One (1) capped tube with sample solution
- C. One (1) packaged oral swab
- D. One (1) foil package with one Test Cartridge and one preservative bag

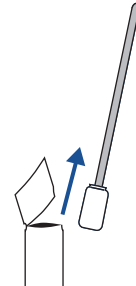


Required but not provided: Timer

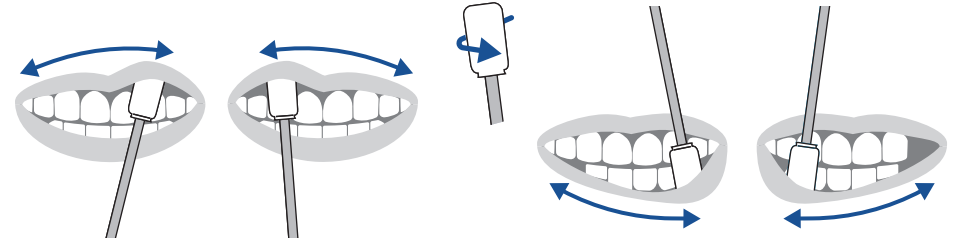
**2** Open the sample collection tube and place it on a level surface.



**3** Remove the oral swab from its packaging.



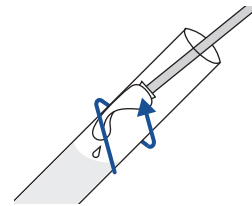
**4** Place the cloth end of the swab against the upper gum line. Slowly wipe the swab across the gum line from right to left all the way to the back of the mouth and then repeat left to right. Flip the swab and repeat the process on the lower gum. Do not brush.



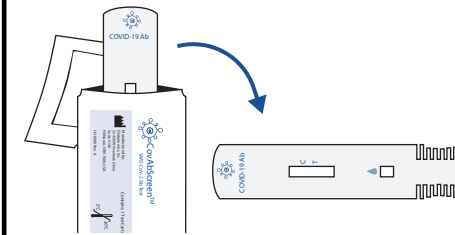
**5** Carefully, without splashing, insert the swab into the liquid in the tube and gently push the swab up and down 6-8 times to release and mix the oral fluid.



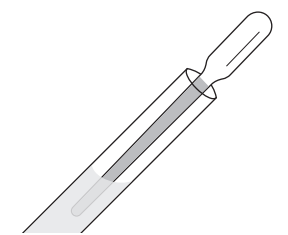
**6** Squeeze as much liquid from the swab as possible by pressing each side of the swab against the inside of the tube. Remove and discard the swab.



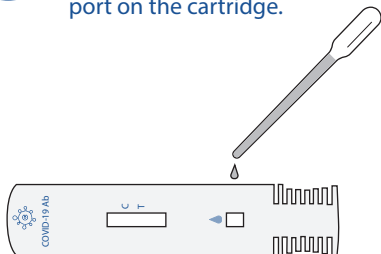
**7** Remove the Test Cartridge from its packaging and place it on a level surface. Dispose of the preservative bag.



**8** Use the transfer pipette to collect the liquid sample. Press the bulb completely and release to fill the pipette.



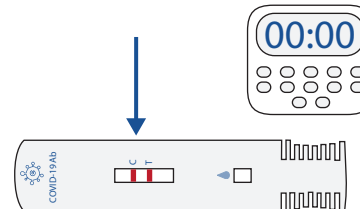
**9** Slowly press the bulb of the pipette to transfer 5 drops of the liquid sample to the sample port on the cartridge.



**10** Start a timer for 15 minutes and allow the test to run. The reading window will start to show a red color as the test runs.



**11** At 15 minutes, evaluate the lines in the reading window on the Test Cartridge. Do not read after 20 minutes.



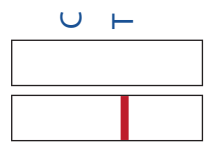
**12** Interpretation of Test Results



If there are two lines, both C and T (even faint lines), the test is positive for antibodies to COVID-19



If there is only a C line, the test is negative for antibodies to COVID-19



If there is no C line, the test is invalid and the test should be repeated with a new kit.

Dispose of the kit and materials in the normal trash.

